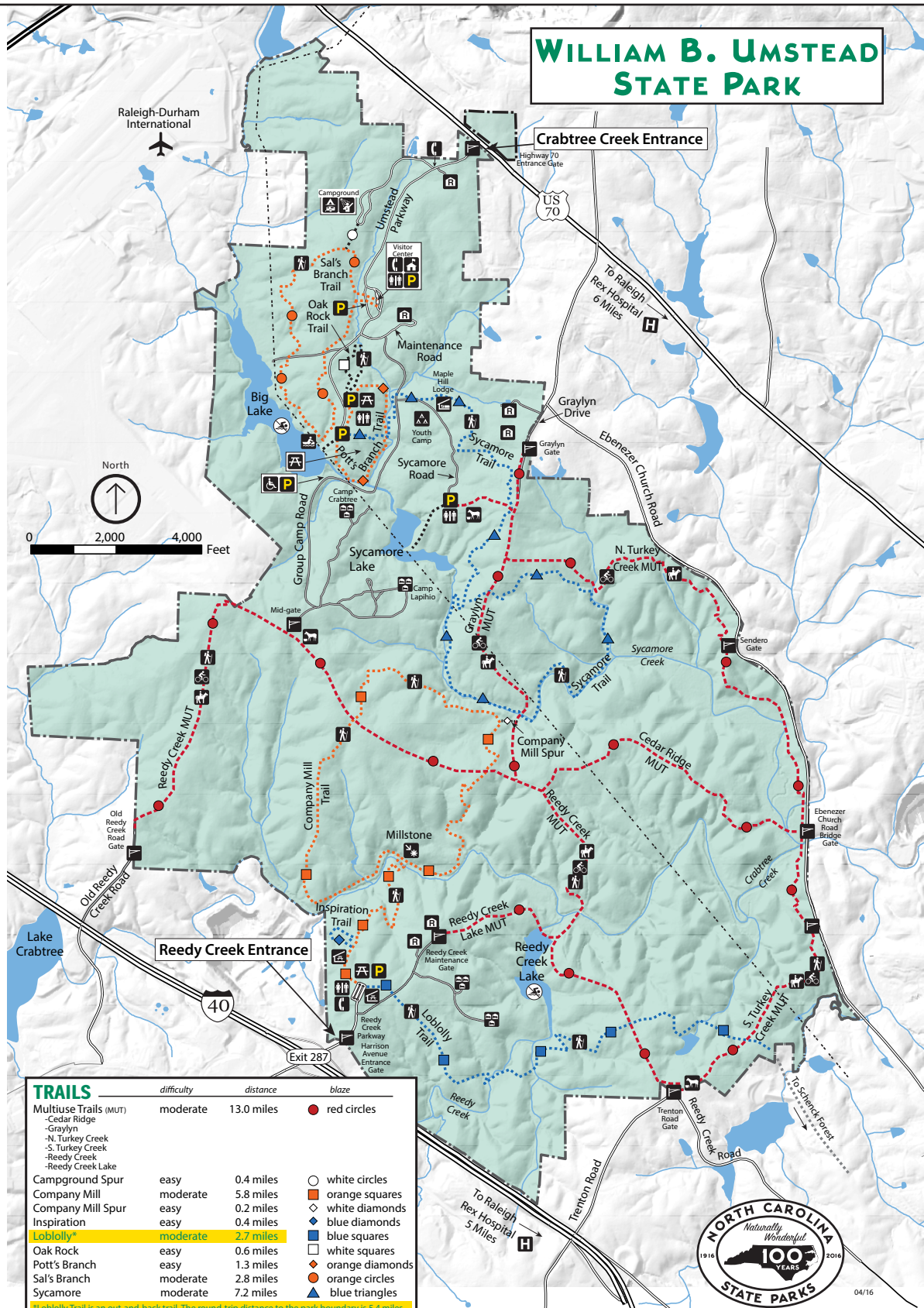


WILLIAM B. UMSTEAD STATE PARK



TRAILS

	difficulty	distance	blaze
Multiuse Trails (MUT)	moderate	13.0 miles	red circles
- Cedar Ridge			
- Graylyn			
- N. Turkey Creek			
- S. Turkey Creek			
- Reedy Creek			
- Reedy Creek Lake			
Campground Spur	easy	0.4 miles	white circles
Company Mill	moderate	5.8 miles	orange squares
Company Mill Spur	easy	0.2 miles	white diamonds
Inspiration	easy	0.4 miles	blue diamonds
Loblolly*	moderate	2.7 miles	blue squares
Oak Rock	easy	0.6 miles	white squares
Pott's Branch	easy	1.3 miles	orange diamonds
Sal's Branch	moderate	2.8 miles	orange circles
Sycamore	moderate	7.2 miles	blue triangles

*Loblolly Trail is an out-and-back trail. The round-trip distance to the park boundary is 5.4 miles.

LEGEND

Accessible	Hiking Trail	Park Office	Restrooms
Bathhouse	Hospital - Emergency dial 911	Parking Area	Roads
Biking Trail	Lodge (Primitive)	Picnic Area	Gravel
Boat Rental	No Swimming	Picnic Shelter	Paved
Bridle Trail	Park Boundary	Point of Interest	Telephone
Group Camp	Park Gate	Powerline	Tent/Trailer Camping
		Ranger Residence	Water for Horses
			Youth Camp



A larger map is available at the park office.